

## Winning scheme for Northern Architecture Centre announced

Snell Associates has won the competition to design the Northern Architecture Centre in Newcastle.

Geoffrey Purves, the chairman of an assessing panel which included Terry Farrell, Terry Pawson and Graham Snowdon – chief planning executive of current landowner the Tyne and Wear Development Corporation – said Robin Snell impressed with strong ideas and an apparent ability to take the project forward on time and within budget. The interviewers were cost consultant Eric Tulley; project developer George Oldham; head of school at Newcastle Professor John Wiltshire; and Tim Bailey, director of Northern Architecture Centre Ltd.

Snell, formerly of Michael Hopkins and Partners, conceives the scheme as a transparent glass enclosure shaded by a structurally independent roof 'parasol'. The exhibition hall is a full-height space with separate access from the quayside by large sliding glass doors facing the Tyne Bridge. A café, bookshop and main entrance link with the exhibition space. The pavilion is naturally ventilated.

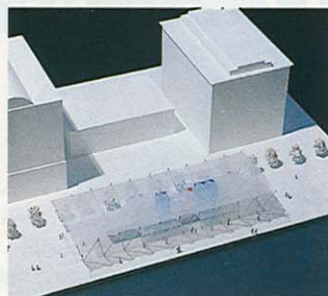
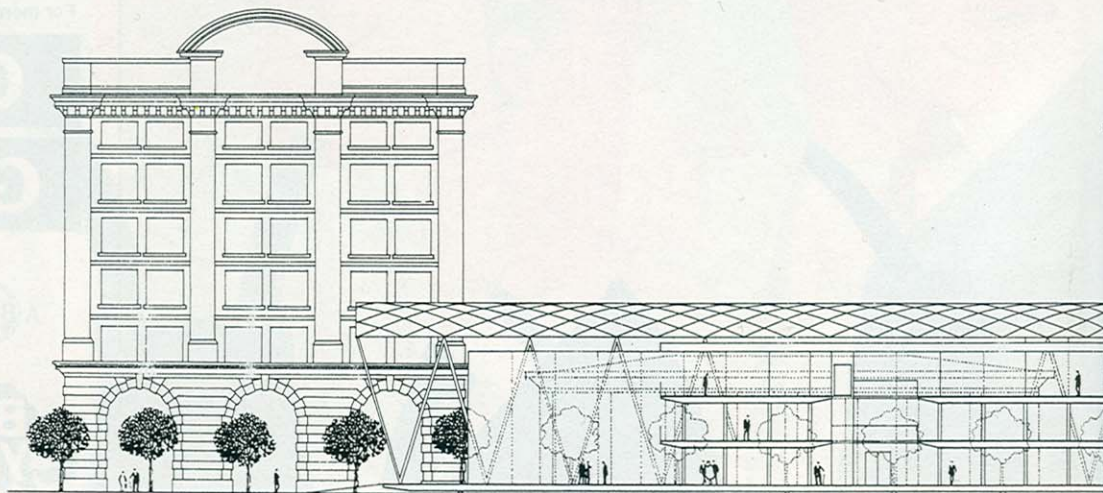
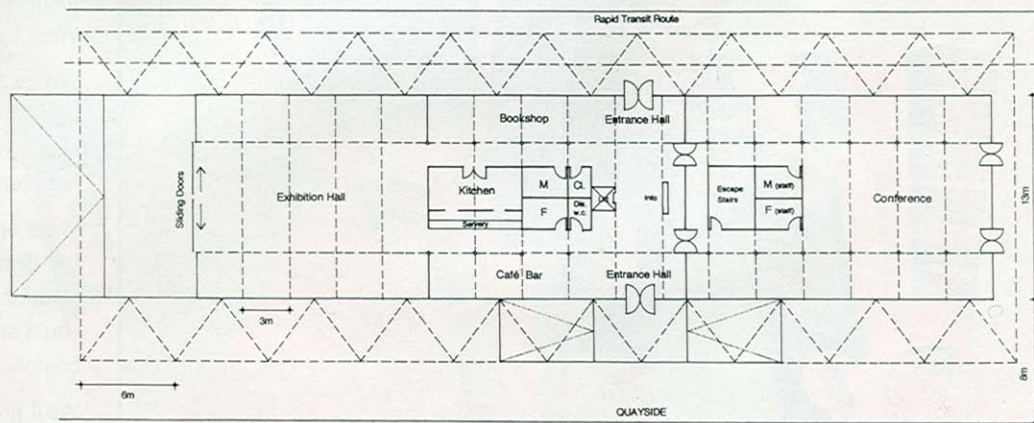
Edinburgh architects Jason Cornish and Adrian Hawker came second, and Leeds architects Bareham Andrews Associates third. Local architects Stephen Mille and Simon Humphreys were commended.

Now, with an application for Lottery funding – £1.5 million of a total cost of £2.25 million – with the Arts Council, and another in for EU funds, the scheme looks closer than ever. It is hoped it might be on site in 1996, fittingly as part of the Year of Visual Arts in the North, launched last week.

David Taylor

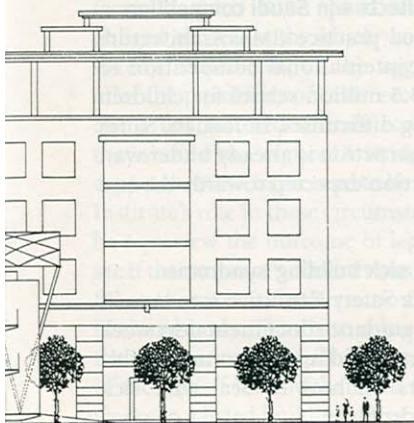
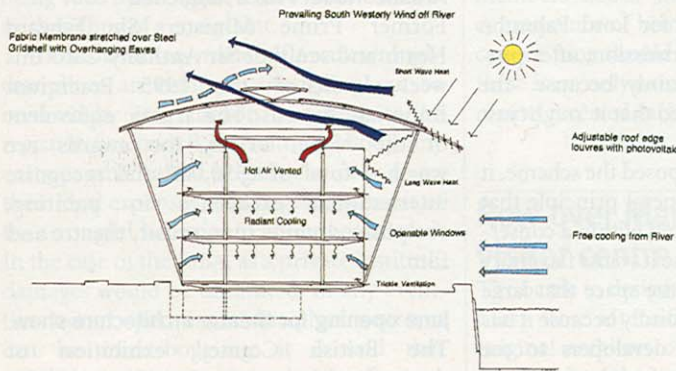
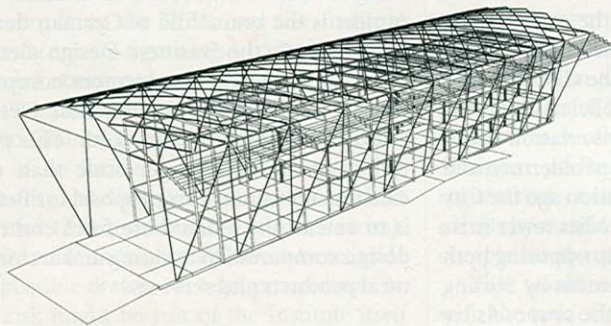
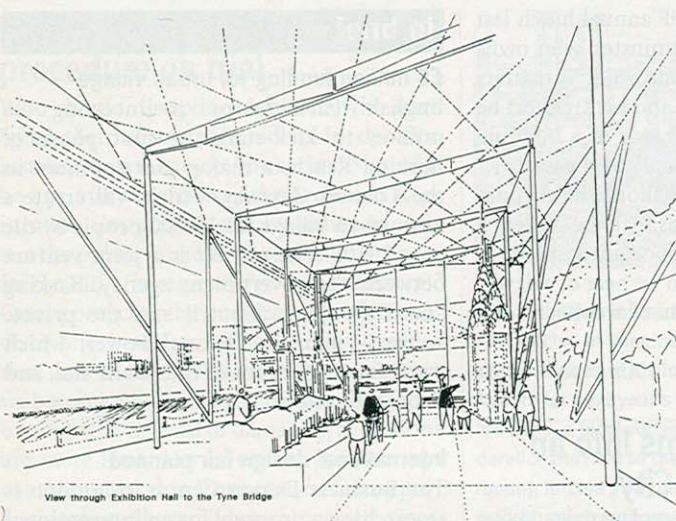


RICHARD DAVIES



RICHARD DAVIES





Robin Snell's open-plan scheme for the Northern Architecture Centre makes much use of its riverside site and the cool air available through the wind-over-water effect (see diagram). At night that quayside setting will be enhanced by illuminating the underside of the fabric roof, which reflects light off its shiny surface. The RIBA competition had 160 registrations and an encouraging 99 entries. Assessing panel chairman Geoffrey Purves said the five schemes shortlisted last week all represented 'bold schemes which worked'.



## Foster masterplans landmark office building for Leeds

Sir Norman Foster and Partners has unveiled a masterplan and design for Criterion Place, destined to become a new landmark for office space in Leeds.

The 24,600m<sup>2</sup> scheme is to be jointly developed by The British Land Company and Leeds City Development Company and comprises three separate office buildings of 5-15 floors around a covered plaza which will provide seating, public art and natural landscaping, flanked by cafés, restaurants and shops. The focal point of the plaza, which forms part of a link between the River Aire and Leeds City Station, is a glazed canopy raised 15m above ground level to give a 'light, airy, weather-protected space'. The



scheme aims to give tenants high-quality working accommodation through a range of options including low-energy alternatives.

Situated on the former Queens Hall on Sovereign Street in the city, the scheme gained planning consent in March. Ove Arup & Partners is the structural engineer.

It all seems a far cry from the days when office rents in Leeds could scarcely justify the cost of developing new commercial space.

